

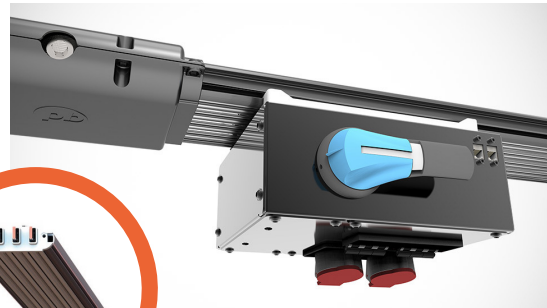
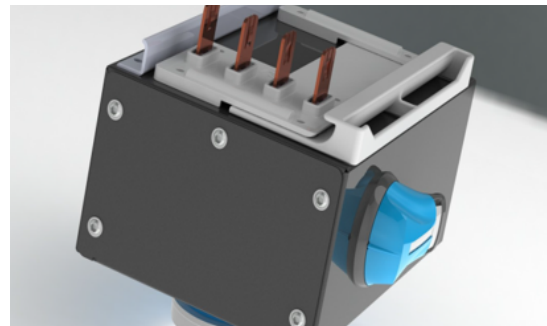


On the *2nd* day of Christmas Hedrick gave to me...

E+I Engineering Intelligent Medium Powerbar (iMPB):

E+I Engineering's innovative iMPB product is an open-channel busway system designed for use in mission critical environments, where security and flexibility of electrical distribution is paramount.

- Busway available in 160A to 800A configurations
- iMPB can be installed horizontally or vertically depending on specific project requirements
- Unique open channel system allows bus plugs anywhere along the busway
- Bus plugs utilize E+I's unique 'earth first, break last' attachment system for optimal safety
- Advanced total and individual circuit integrated monitoring capability.
- Busway is housed in a IP-2X finger-safe, open channel aluminum casing



E+I ENGINEERING GROUP

